

# NYX

NYX IPX-8P1+

## 8CH PoE NVR

### Features

The NYX IP-X8P1+ is an 8 channel 8MP High Definition PoE NVR, which adopts the most advanced SOC technology to ensure high definition recording in each channel and outstanding reliability of the system.

Integrated with 8 PoE Plug & Play ports providing easy IP camera connection, simultaneous 8ch playback, and 4K high definition display output. With thumbnail search capabilities and Intelligent Video Analytics, finding the footage you need takes seconds, not hours!

Capacity for 1 x 10TB hard drive ensures plenty of storage for 4K camera use. The perfect choice for meeting the demands of your security requirements.



# 4K ULTRA HD

### Specifications

System	Compression	H.265
	OS	Embedded Linux
Video	Performance	Pentaplex: preview, record, playback, backup and remote access
	Network Input	4 Channel IPC input
	Global Bitrate	80Mbps
	Input Resolution	8MP / 5MP / 4MP / 3MP / 1080P / 960P / 720P @ 25/30fps
	Output	HDMI x1: 4K, 1080P, 1280x1024
Audio	Network Input	8 Channel IPC audio input
	2-way Audio	Via Remote Software / Smartphone App
	Local Output	RCA x1
Record	Record Stream	Dual Stream recording
	Resolution	8MP / 5MP / 4MP / 3MP / 1080P / 960P / 720P
	Mode	Manual, Timer, Motion, Sensor
Playback	Playback	Max 8 Channel Simultaneous
	Search	Time Slice / Time / Event / Sensor / POS
	Function	Play, pause, FF, FB, digital zoom
Alarm	Mode	Manual, Sensor, Motion, Exception
	Input	Support IPC alarm input
	Output	Support IPC alarm output
Network	Triggering	Record, Snap, Email, Preset
	Interface	RJ45 x1 : 10/100 Mbps
	PoE Port	RJ45 x8
	Protocol	TCP/IP, DHCP, DNS, DDNS, UPnP, NTP, SMTP, PPPoE, SNMP, FTP
	Remote Access	Max 10 users online
POS	8 Channel Support	Optima, Haley, SAM4S, AVE
Smartphone	Platform	iOS, Android
Storage	HDD	SATA x1 : Max 10TB per HDD
Backup	Backup	USB Flashdrive, USB mobile HDD, Network
Ports	USB	USB 2.0 x1 (front panel), USB 2.0 x1 (rear panel)
Other	Remote Controller	Yes
	Cooling Fan	Single
	Power Consumption	≤ 15W (without HDD) DC48V
	Dimensions (mm)	300(W) x 270(D) x 55(H)
	Working Environment	-10°C ~ 50°C 10% ~ 90% humidity

Product specifications and appearance subject to change without notice

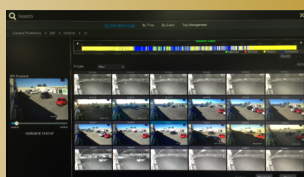
### People & Vehicle Detection

When used with compatible cameras, this **advanced AI** feature can reliably detect **people** and **vehicles** allowing you to quickly search footage or be alerted via **Push Notifications**.



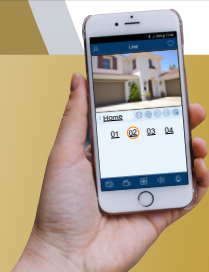
### Time-Slice Search

The **fastest** method of finding video footage. Simply click on any **thumbnail image** to start instant playback. Find what you're looking for in **seconds** - not hours!



### Push Notifications

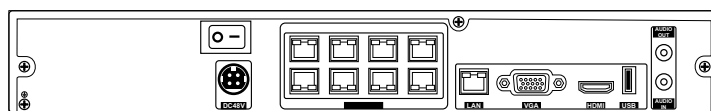
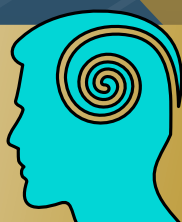
Have your NVR **alert** you to intrusions or events by **pushing notifications** straight to your smartphone. Playback the event within seconds for **peace-of-mind** and quick response!\*



### Intelligence Analytics

Get **FAST** search results by configuring in-built **image analytic algorithms**.

Supports Tripwire, Abandoned Object, Missing Object & Intrusion.



\* Push notifications and remote viewing are reliant on broadband connectivity provided by 3rd party infrastructure which at times may be limited by network congestion or ISP restrictions. For mobile app connectivity, a reliable Internet service with over 1Mbps upload speed is recommended at the recorder. Some ISPs restrict or limit some activity within their router/modems or network, which may impact or deny access to the mobile app service. No guarantee or responsibility is accepted for connection problems based on 3rd party equipment or ISP performance.